

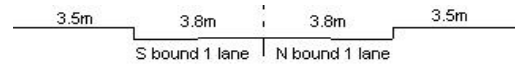
YEAR 2018

CORE STATION 3022

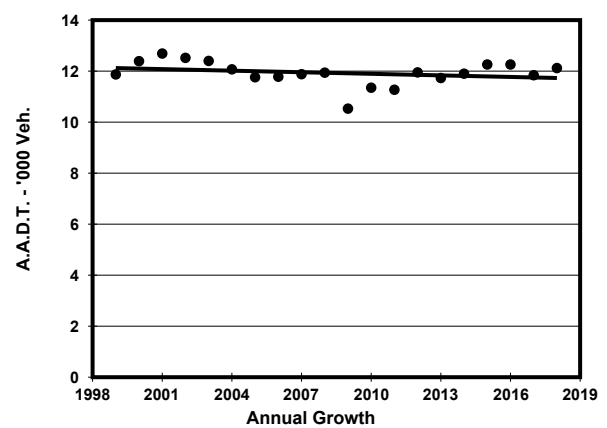
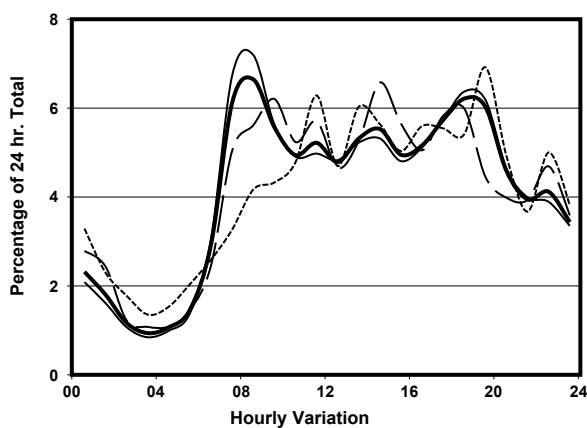
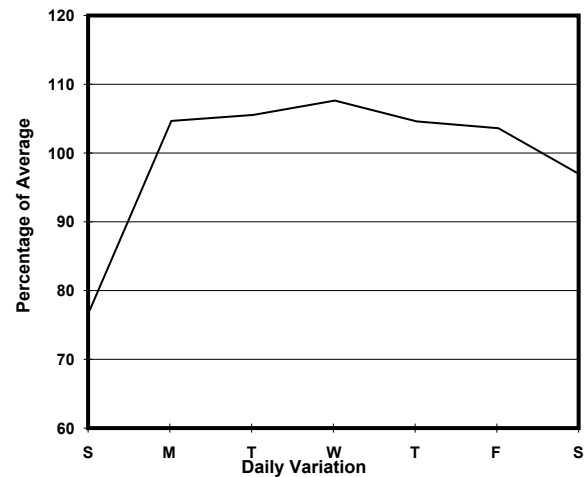
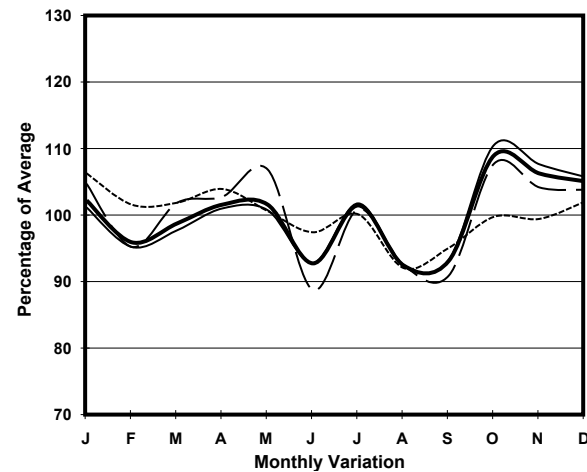
ROAD NETWORK MAJOR

ROAD TYPE LOCAL DISTRIBUTOR

LINK SHEUNG FUNG ST (from SHUNG WAH ST to FUNG TAK RD)



## 1. TRAFFIC FLOW VARIATION AND GROWTH



— All day      - - - - - Mon. - Fri.      ..... Sat.      - - - - - Sun.

## 2. TRAFFIC CHARACTERISTICS (BY DIRECTION)

| Parameter                            | All - Day | Mon. - Fri. | Sat.      | Sun.      |
|--------------------------------------|-----------|-------------|-----------|-----------|
| <b>SOUTH BOUND</b>                   |           |             |           |           |
| A.A.D.T.                             | 8850      | 9510        | 8460      | 6740      |
| R 12 / 24 - %                        | 65.5      | 66.1        | 66.8      | 60.2      |
| R 16 / 24 - %                        | 84        | 84.7        | 83.2      | 79.9      |
| AM Peak Hour                         | 0800-0900 | 0800-0900   | 0900-1000 | 0800-0900 |
| One-way flow at AM peak hour         | 580       | 680         | 520       | 270       |
| T - % (AM)                           | -         | -           | -         | -         |
| PM Peak Hour                         | 1800-1900 | 1800-1900   | 1700-1800 | 1600-1700 |
| One-way flow at PM peak hour         | 510       | 570         | 480       | 400       |
| T - % (PM)                           | -         | -           | -         | -         |
| Prop.of commercial vehicles - 16 hr. | -         | -           | -         | -         |
| <b>NORTH BOUND</b>                   |           |             |           |           |
| A.A.D.T.                             | 3270      | 3400        | 3390      | 2740      |
| R 12 / 24 - %                        | 68        | 69.1        | 67        | 62.3      |
| R 16 / 24 - %                        | 87.3      | 87.9        | 85.5      | 84.9      |
| AM Peak Hour                         | 0700-0800 | 0700-0800   | 0800-0900 | 0900-1000 |
| One-way flow at AM peak hour         | 280       | 340         | 220       | 150       |
| T - % (AM)                           | -         | -           | -         | -         |
| PM Peak Hour                         | 1800-1900 | 1800-1900   | 1800-1900 | 1800-1900 |
| One-way flow at PM peak hour         | 240       | 260         | 250       | 190       |
| T - % (PM)                           | -         | -           | -         | -         |
| Prop.of commercial vehicles - 16 hr. | -         | -           | -         | -         |

## 3. OTHER INFORMATION AND COMMENT